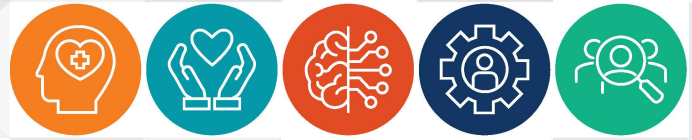




Australian Government

Comcare



Health, Safety and Wellbeing Commitment

Comcare and its senior executives are committed to providing a workplace culture and environment where the health, safety and wellbeing of our people is at the heart of everything we do every day.

We are committed to meeting the requirements under the Commonwealth *Work Health and Safety Act 2011* (Cth) (WHS Act), and the *Safety, Rehabilitation and Compensation Act 1988* (Cth) (SRC Act) by having a work health and safety management system that supports our people while we focus our efforts to deliver towards our purpose to **Promote and enable safe and healthy work.**

We do this by committing to the following:



Providing and maintaining a safe and mentally healthy workplace culture where we take care of each other through supporting, collaborating and providing a work environment where safety is prioritised



Taking all reasonably practicable measures to eliminate hazards and minimise risks to the physical and mental health, safety and wellbeing of our people



Our senior leadership demonstrating due diligence to proactively promote and embed safe and healthy workplaces and systems of work



Providing comprehensive and relevant health, safety and wellbeing training to our people



Auditing, monitoring and reviewing work health, safety and rehabilitation performance to assess the effectiveness of safety management systems and wellbeing programs



Fostering a collaborative and cooperative relationship with our health and safety representatives, our people and other stakeholders through effective and meaningful consultation regarding health, safety and wellbeing at work



Encouraging effective early intervention practices and providing rehabilitation services tailored to the individual to prevent work related injuries and deliver better return to work outcomes

CEO Signature

Date 16 August 2024